



MONTEREY PENINSULA REGIONAL PARK DISTRICT

Preserving & Protecting Parks & Open Space

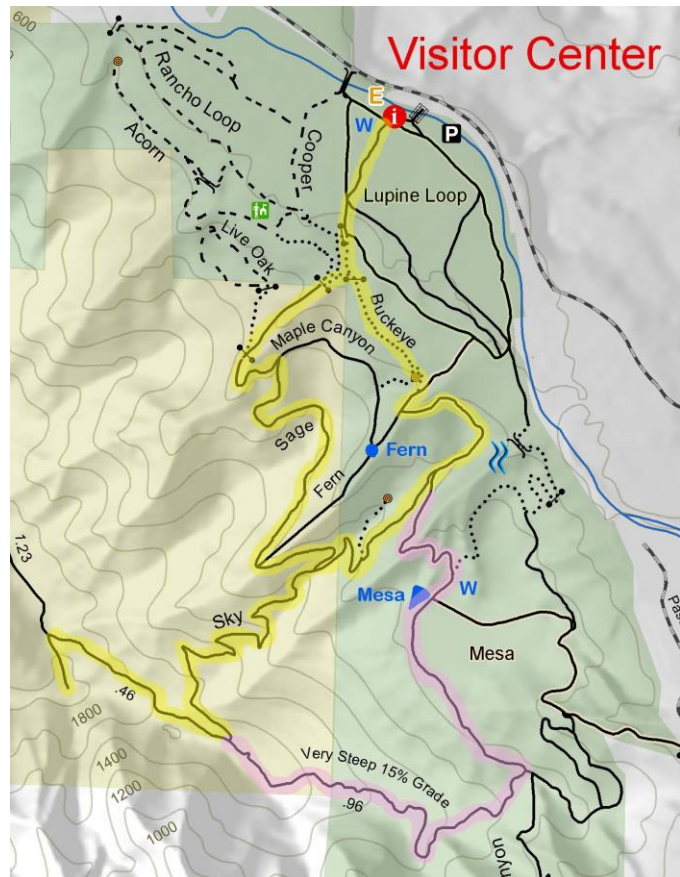
Garland Hikes: Snively's Ridge

Distance	Approx Hiking Time*	Elevation Gain
6.4/7.0 miles	2 hours 40 minutes/3 hours 10 minutes	1950 ft

This hike takes you to the highest spot in Garland Ranch Regional Park with great views of the Monterey Peninsula. The first distance and times are for the route in yellow, the second for the route in pink.

Directions:

- From the Visitor Center, take the **Shortcut Trail** (straight ahead with your back to the Visitor Center). When you reach the end of the Shortcut Trail, follow the signs for the **Maple Canyon Trail** by going up the hill.
- When you get to the start of the Buckeye Nature Trail (wood fence/stile), follow the signs for the **Maple Canyon Trail**. In a short distance you will turn left, up the hill. Continue up Maple Canyon. You will pass the old homestead site on your right. Shortly after that you will come to the **Sage Trail**.
- Turn right on the **Sage Trail**. Follow Sage uphill then along the flank of the hill. You will come to where Sage meets the Fern Trail. There is a water trough here and a bench. The water is safe for animals, but not for people. Continue straight on Sage to the **Sky Trail**. There is a bench here.
- Continue uphill following the **Sky Trail**, uphill. You'll climb up Sky for 8/10ths of a mile before reaching the **Snively's Ridge Trail**. When you reach Snively's Ridge, you will be rewarded with 360-degree views and a bench to catch your breath.
- To go to the highest point in the Park, turn right on Snively's Ridge (to the West) and go just under ½ a mile until you see a spur trail to your left. Take the spur a short distance to reach the Park summit. Take some time here to enjoy the views; you've earned it.
- To head back down, go back the way you came, toward the Sky Trail. Go back down Sky, continuing past the Sage Trail until Sky meets the **Mesa Trail**. (See below for an alternate route down.)
- Continue downhill on the **Mesa Trail**. Once you see the Fern Trail on your left, continue on the Mesa Trail just a bit farther until you see the **Buckeye Trail** on your left.
- Take the **Buckeye Trail**, up the short set of stairs. As you exit the Buckeye Trail, continue down the hill. You will pass a wooden gate on your left. At the bottom of the hill, take the middle of the three trails, following the sign back to the Visitor Center along the **Shortcut Trail**.
- An alternate route down is shown in pink. This route is quite steep in spots. The use of hiking poles is advised. When you reach Sky, continue straight on **Snively's Ridge** for almost a mile until you reach the **Garzas Canyon Trail**. Turn left on Garzas Canyon, toward La Mesa and the **Mesa Trail**. Take the **Mesa Trail** to where it meets Sky and then follow the remaining directions above.



* Hiking times are approximate. Experienced hikers may complete the hike in less time, inexperienced hikers or families with small children may need more time. Please plan accordingly.



MONTEREY PENINSULA REGIONAL PARK DISTRICT

Preserving & Protecting Parks & Open Space

- ✓ There is water at the Visitor Center and La Mesa, but nowhere else on the trails. Remember to bring plenty of water on your hike.
- ✓ There are restrooms at the Visitor Center and the Ranger Station, but nowhere else in the park.
- ✓ There are trash cans at a number of locations on the lower trails, but no trash cans higher up. Please pack out *everything* you pack in.
- ✓ On some trails you may encounter horses. Equestrians have the right of way in those situations
- ✓ If you are hiking with a dog, be aware your dog can be off leash but must be under your control.
- ✓ Take time to look at the flowers, listen to the birds, enjoy the views and generally take in the pleasure of being out in Nature. But *please* don't pick the flowers!

* Hiking times are approximate. Experienced hikers may complete the hike in less time, inexperienced hikers or families with small children may need more time. Please plan accordingly.